



26.600

OEM-Pressure Transmitter

- ▶ thickfilm ceramic sensor
- ▶ output signal
4 ... 20 mA / 2-wire
option: 0 ... 10 V / 3-wire
- ▶ accuracy:
0.25 % FSO BFSL
(0.5 % FSO IEC 60770)
- ▶ nominal pressure ranges
from 0 ... 1 bar
up to 0 ... 400 bar



26.600

OEM Pressure Transmitter

Technical Data

Input pressure range

Nominal pressure gauge	[bar]	-1...0 ¹	1	1.6	2.5	4	6	10	16	25	40	60	100	160	250	400
Nominal pressure abs.	[bar]	-	-	1.6	2.5	4	6	10	16	25	-	-	-	-	-	-
Permissible overpressure	[bar]	3	3	7	7	12	12	25	50	50	120	120	250	500	500	600

Output signal / Supply

Standard	2-wire:	4 ... 20 mA / V _s = 12 ... 36 V _{DC}
Option	3-wire:	0 ... 10 V / V _s = 14 ... 36 V _{DC}

Performance

Accuracy	≤ ± 0.5 % FSO	(BFSL: ≤ ± 0.25 % FSO)
Permissible load	current 2-wire: voltage 3-wire	R _{max} = [(V _s - V _{s min}) / 0.02] Ω R _{min} = 10 kΩ
Influence effects	supply: 0.05 % FSO / 10 V / load: 0.05 % FSO / kΩ	

Thermal effects

Thermal error for offset and span in compensated range	≤ ± 0.3 % FSO / 10 K
	-25 ... 85 °C

Mechanical stability

Vibration	10 g RMS (20 ... 2000 Hz)	Shock	100 g / 11 ms
-----------	---------------------------	-------	---------------

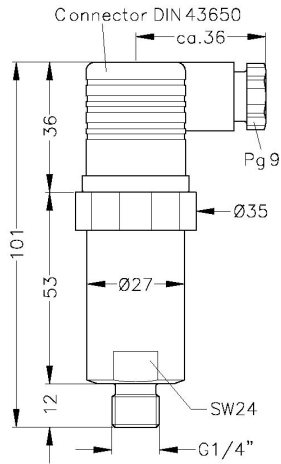
Permissible temperatures

Medium	-25 ... 125 °C	Electronics / environment	-25 ... 85 °C	Storage	-40 ... 125 °C
--------	----------------	---------------------------	---------------	---------	----------------

¹ in this pressure range accuracy is ≤ 1 % FSO

Mechanical connection

Standard

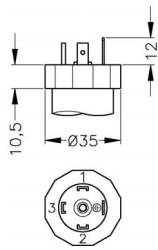


G1/4" DIN 3852

⇒ With pressure ranges $P_N \leq 25$ bar gauge:
total length decreases by 5 mm

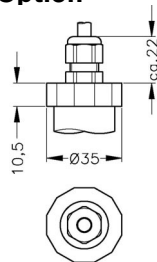
Electrical connection

Standard



DIN 43650 (IP 65)

Option



Cable gland (IP 67)²

Materials

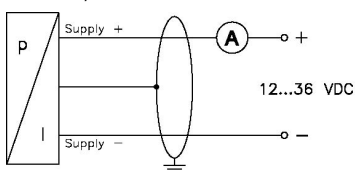
Pressure port / Housing	stainless steel 1.4305 (303)		
Seals (media wetted)	$P_N < 100$ bar: FKM	$P_N \geq 100$ bar: NBR	others on request
Diaphragm	ceramics Al_2O_3 96 %		
Media wetted parts	pressure port, seals, diaphragm		

Pin configuration

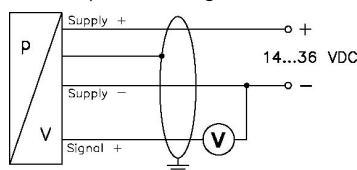
Electrical connection		DIN 43650	cable colours (DIN 47100)
2-wire-system	Supply +	1	white
	Supply -	2	brown
	Ground	ground contact	yellow / black
3-wire-system	Supply +	1	white
	Supply -	2	brown
	Signal +	3	green
	Ground	ground contact	yellow / black

Wiring diagrams

2-wire-system (current)



3-wire-system (voltage)



² different cable types and lengths available; standard: 2m PVC cable (without ventilation tube), optionally cable with ventilation tube

Ordering code 26.600

26.600 - - - - -

Input	[bar]																			
	1,0	1	0	0	1															
absolute pressure	1,6	1	6	0	1															
special version 500	2,5	2	5	0	1															
	4,0	4	0	0	1															
	6,0	6	0	0	1															
	10	1	0	0	2															
	16	1	6	0	2															
	25	2	5	0	2															
	40	4	0	0	2															
	60	6	0	0	2															
	100	1	0	0	3															
	160	1	6	0	3															
	250	2	5	0	3															
	400	4	0	0	3															
	-1 ... 0 ¹	X	1	0	2															
	customer	X	X	X	X															
Output																				
	4 ... 20 mA / 2-wire					1														
	0 ... 10 V / 3-wire					3														
Electrical Connection																				
	Male and female plug DIN 43650					1	0	0												
	Cable gland incl. Cable ²					4	0	0												
	customer					X	X	X												
Mechanical Connection																				
	G1/4" DIN 3852								3	0	0									
	customer								X	X	X									
Special version																				
	standard																	0	0	0
	oxygen application																		0	7
	absolute pressure																		5	0
	customer																		X	X

¹ The accuracy in this pressure range is 1 % FSO

² different cable types and lengths deliverable, standard: 2 m PVC cable (without ventilation tube), optionally cable with ventilation tube

